

K-SERIES  
**CRAWLER DOZERS**



**JOHN DEERE**

700K / 750K / 850K

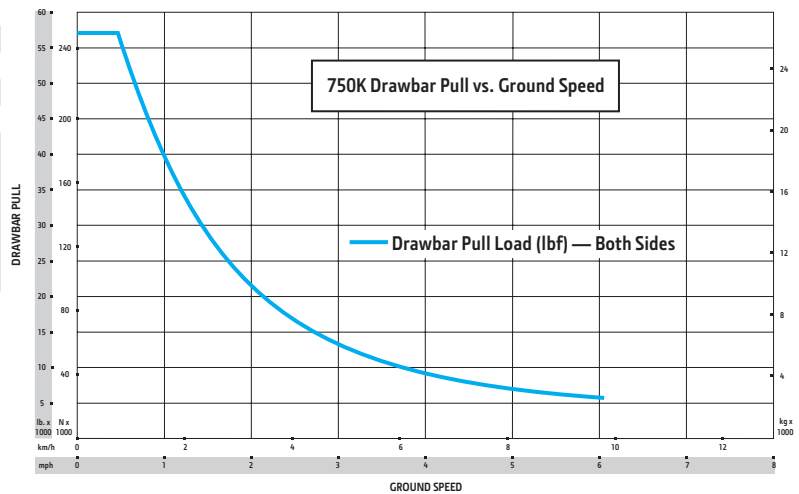


**PUSH, GRADE,  
PRODUCE**



# 750K SPECIFICATIONS

Engine	750K XLT / 750K LGP	750K
<b>Blade Type</b>	<b>Power/Angle/Tilt (PAT)</b>	<b>Outside Dozer Blade (OSD)</b>
Manufacturer and Model	John Deere PowerTech™ PVS 6068	John Deere PowerTech PVS 6068
Non-Road Emission Standard	EPA Final Tier 4/EU Stage IV	EPA Final Tier 4/EU Stage IV
Displacement	6.8L (414 cu. in.)	6.8L (414 cu. in.)
SAE Net Rated Power	123 kW (165 hp) at 1,800 rpm	123 kW (165 hp) at 1,800 rpm
Net Peak Torque	768 Nm (567 lb.-ft.) at 1,400 rpm	768 Nm (567 lb.-ft.) at 1,400 rpm
Aspiration	Turbocharged with charge air cooler	Turbocharged with charge air cooler
Air Cleaner	Vacuum-aspirated dual-element dry canister	Vacuum-aspirated dual-element dry canister
<b>Cooling</b>	<b>750K XLT / 750K LGP / 750K</b>	
Type	Variable-speed suction fan with automatic reversing	
Engine Coolant Rating	-37 deg. C (-34 deg. F)	
Engine Radiator	10 fins per in.	
<b>Powertrain</b>	<b>750K XLT</b>	
<b>Transmission</b>	Automatic, dual-path, hydrostatic (HST) drive; load-sensing feature automatically adjusts speed and power to match changing load conditions; each individually controlled track is powered by a variable-displacement piston pump and motor combination; ground-speed selection buttons on single-lever steering and direction control; independently selectable reverse speed ratios of 100%, 115%, or 130% of forward ground speed; decelerator pedal controls ground speed to stop	
System Relief Pressure	45 850 kPa (6,650 psi)	
Travel Speeds		
Forward and Reverse	9.7 km/h (6.0 mph)	
Maximum (optional)	11.0 km/h (6.8 mph)	
<b>Steering</b>	Single-lever steering, speed, direction control, and counter-rotation; full power turns and infinitely variable track speeds provide unlimited maneuverability and optimum control; HST steering eliminates steering clutches and brakes	
<b>Final Drives</b>	Double-reduction, planetary final drives mounted independently of track frames and dozer push frames for isolation from shock loads	
Total Ratio	46.41 to 1	
<b>Drawbar Pull</b>		
Maximum	254 kN (57,000 lb.)	
At 1.9 km/h (1.2 mph)	156 kN (35,000 lb.)	
At 3.2 km/h (2.0 mph)	98 kN (22,000 lb.)	
<b>Brakes</b>		
Service	HST (dynamic) braking stops the machine whenever the direction-control lever is moved to neutral or the decelerator is depressed to the detent	
Parking	Exclusive spring-applied, hydraulically released park-brake safety feature engages wet, multiple-disc brakes automatically whenever the engine stops, the operator depresses the decelerator pedal to the brake position, the unit is in neutral for 3 seconds (with detected motion), or the park-lock lever is in the park position; machine cannot be driven with brake applied, minimizing wearout or need for adjustment	



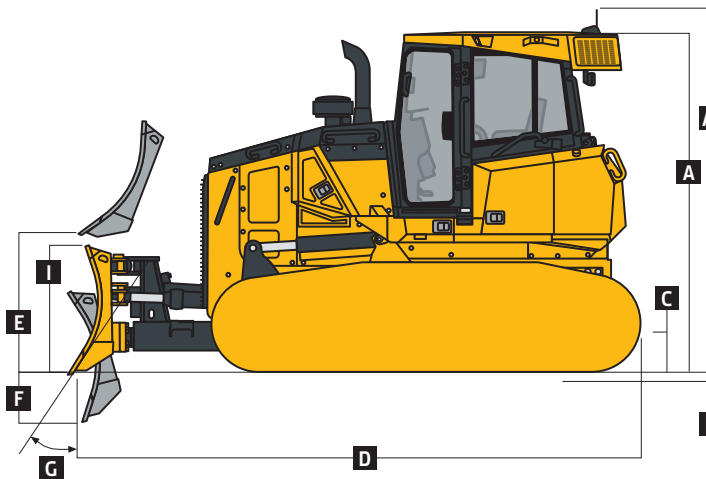
# 750K SPECIFICATIONS



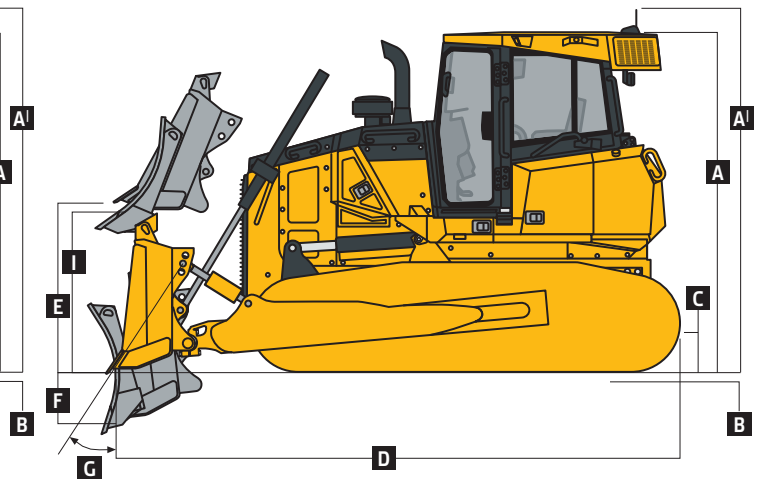
<b>Hydraulics</b>		<b>750K XLT / 750K LGP</b>	<b>750K</b>	
<b>Blade Type</b>	<b>PAT</b>		<b>OSD</b>	
Type	Load sense hydraulic system with variable-displacement piston pump		Load sense hydraulic system with variable-displacement piston pump	
Pump Displacement	63 cc		63 cc	
System Relief Pressure	24 993 kPa (3,625 psi)		24 993 kPa (3,625 psi)	
Differential Pressure	1896 kPa (275 psi)		1896 kPa (275 psi)	
Maximum Flow at Unloaded High Idle	138 L/m (36 gpm)		138 L/m (36 gpm)	
Control	3-function hydraulic-pilot T-bar joystick with push-button angle function		2-function hydraulic-pilot T-bar joystick	
<b>Electrical</b>		<b>750K XLT / 750K LGP / 750K</b>		
Voltage	24 volts			
<b>Capacity</b>				
Battery	950 CCA			
Reserve	190 min.			
<b>Alternator Rating</b>				
Cab	130 amp			
Canopy	100 amp			
Lights	Grille mounted (2), rear mounted (2), engine compartment (1), and rear reflectors (2)			
<b>Undercarriage</b>		<b>750K XLT</b>	<b>750K LGP</b>	<b>750K</b>
<b>Blade Type</b>	<b>PAT</b>		<b>PAT</b>	<b>OSD</b>
<b>Tracks</b>	John Deere Dura-Trax™ features large deep-heat-treated, sealed, and lubricated track links and through-hardened, sealed, and lubricated rollers for maximum wear resistance; sprockets are segmented; extreme-duty shoes are available (on some models) for severe applications			
Track Gauge	1880 mm (74 in.)	2134 mm (84 in.)		1880 mm (74 in.)
Grouser Width	560 mm (22 in.)	865 mm (34 in.)		560 mm (22 in.)
Chain	Sealed and lubricated	Sealed and lubricated		Sealed and lubricated
Shoes, Each Side	45	45		40
Track Rollers, Each Side	8	8		7
Track Length on Ground	3073 mm (121 in.)	3073 mm (121 in.)		2591 mm (102 in.)
Ground Contact Area	34 344 cm <sup>2</sup> (5,323 sq. in.)	53 077 cm <sup>2</sup> (8,227 sq. in.)		28 957 cm <sup>2</sup> (4,488 sq. in.)
Ground Pressure	44.5 kPa (6.46 psi)	31.5 kPa (4.57 psi)		52.9 kPa (7.67 psi)
Track Pitch	191 mm (7.5 in.)	191 mm (7.5 in.)		191 mm (7.5 in.)
Oscillation at Front Roller	±135 mm (±5.3 in.)	±127 mm (±5.0 in.)		±110 mm (±4.3 in.)
<b>Operator Station</b>		<b>750K XLT / 750K LGP / 750K</b>		
ROPS (ISO 3471 – 2008) and FOPS (ISO 3449 – 2005)				
<b>Serviceability</b>				
<b>Refill Capacities</b>				
Fuel Tank with Lockable Cap	368 L (97.5 gal.)			
Cooling System with Recovery Tank	40.75 L (10.8 gal.)			
Engine Oil with Filter	24.6 L (6.5 gal.)			
Reservoir with Filter				
Transmission	115 L (30 gal.)			
Hydraulic	112 L (29.7 gal.)			
Diesel Exhaust Fluid (DEF) Reservoir	13.6 L (3.6 gal.)			
<b>Operating Weights</b>		<b>750K XLT</b>	<b>750K LGP</b>	<b>750K</b>
<b>Blade Type</b>	<b>PAT</b>		<b>PAT</b>	<b>OSD</b>
<i>Base Weight (with standard equipment, rollover protective structures [ROPS], full fuel tank, and 79-kg [175 lb.] operator)</i>	15 661 kg (34,527 lb.)	17 121 kg (37,745 lb.)		15 679 kg (34,566 lb.)

# 750K

Operating Weights <i>(continued)</i>	750K XLT	750K LGP	750K
<b>Blade Type</b>	<b>PAT</b>	<b>PAT</b>	<b>OSD</b>
<b>Optional Components</b>			
Cab with Pressurizer and Heater/Air Conditioner	337 kg (743 lb.)	337 kg (743 lb.)	337 kg (743 lb.)
ROPS Canopy			
Heater	39 kg (85 lb.)	39 kg (85 lb.)	39 kg (85 lb.)
Front and Door Screens	84 kg (186 lb.)	84 kg (186 lb.)	84 kg (186 lb.)
Rear Screen	23 kg (50 lb.)	23 kg (50 lb.)	23 kg (50 lb.)
Side Screens	44 kg (98 lb.)	44 kg (98 lb.)	44 kg (98 lb.)
Cab with Air Conditioner			
Front and Door Screens	79 kg (175 lb.)	79 kg (175 lb.)	79 kg (175 lb.)
Rear Screen	34 kg (75 lb.)	34 kg (75 lb.)	34 kg (75 lb.)
Side Screens	54 kg (120 lb.)	54 kg (120 lb.)	54 kg (120 lb.)
Condenser Guard (cab with air conditioner)	55 kg (121 lb.)	55 kg (121 lb.)	55 kg (121 lb.)
Limb Risers (ROPS canopy and cab)	261 kg (575 lb.)	261 kg (575 lb.)	261 kg (575 lb.)
Heavy-Duty Grille	28 kg (62 lb.)	28 kg (62 lb.)	28 kg (62 lb.)
Lift-Cylinder Hose Guards	42 kg (93 lb.)	42 kg (93 lb.)	77 kg (170 lb.)
Tank Guards	323 kg (712 lb.)	323 kg (712 lb.)	323 kg (712 lb.)
Rear Counterweight	326 kg (720 lb.)	326 kg (720 lb.)	326 kg (720 lb.)
Retrieval Hitch	37 kg (81 lb.)	37 kg (81 lb.)	37 kg (81 lb.)
Drawbar, Extended Rigid	130 kg (286 lb.)	130 kg (286 lb.)	130 kg (286 lb.)
Blade Brush Guard	87 kg (192 lb.)	87 kg (192 lb.)	87 kg (192 lb.)
Center Chain Guides	61 kg (135 lb.)	61 kg (135 lb.)	61 kg (135 lb.)
Full-Length Rock Guards	154 kg (340 lb.)	154 kg (340 lb.)	174 kg (384 lb.)
Track Shoes			
560-mm (22 in.) Moderate Duty	In base	—	In base
560-mm (22 in.) Extreme Duty	134 kg (296 lb.)	—	119 kg (263 lb.)
610-mm (24 in.) Moderate Duty	140 kg (309 lb.)	—	125 kg (275 lb.)
610-mm (24 in.) Extreme Duty	289 kg (637 lb.)	—	257 kg (566 lb.)
710-mm (28 in.) Moderate Duty	—	-418 kg (-922 lb.)	—
865-mm (34 in.) Moderate Duty	—	In base	—
<b>Machine Dimensions</b>			
<b>Blade Type</b>	<b>PAT</b>	<b>PAT</b>	<b>OSD</b>
<b>A</b> Overall Height to Roof	3128 mm (10 ft. 3 in.)	3128 mm (10 ft. 3 in.)	3128 mm (10 ft. 3 in.)
<b>A<sup>1</sup></b> Overall Height with Receivers/Antennae	3517 mm (11 ft. 6 in.)	3517 mm (11 ft. 6 in.)	3517 mm (11 ft. 6 in.)
<b>B</b> Tread Depth with Single-Bar Grouser			
Moderate Duty	56 mm (2.2 in.)	56 mm (2.2 in.)	56 mm (2.2 in.)
Extreme Duty	69 mm (2.7 in.)	69 mm (2.7 in.)	69 mm (2.7 in.)
<b>C</b> Ground Clearance in Dirt	356 mm (14 in.)	356 mm (14 in.)	356 mm (14 in.)
<b>D</b> Overall Length	4921 mm (197 in.) (16 ft. 5 in.)	5246 mm (207 in.) (17 ft. 3 in.)	4937 mm (194 in.) (16 ft. 2 in.)
Length with Extended Drawbar	5210 mm (205 in.) (17 ft. 1 in.)	5535 mm (218 in.) (18 ft. 2 in.)	5226 mm (206 in.) (17 ft. 2 in.)
<b>E</b> Blade Lift Height	1025 mm (40.3 in.) (3 ft. 4.3 in.)	1025 mm (40.3 in.) (3 ft. 4.3 in.)	1050 mm (41.3 in.) (3 ft. 5.3 in.)
<b>F</b> Blade Digging Depth	650 mm (25.6 in.)	650 mm (25.6 in.)	575 mm (22.6 in.)
<b>G</b> Blade Cutting-Edge Angle, Adjustable	55.2 to 60.1 deg.	55.2 to 60.1 deg.	50.5 to 60.0 deg.

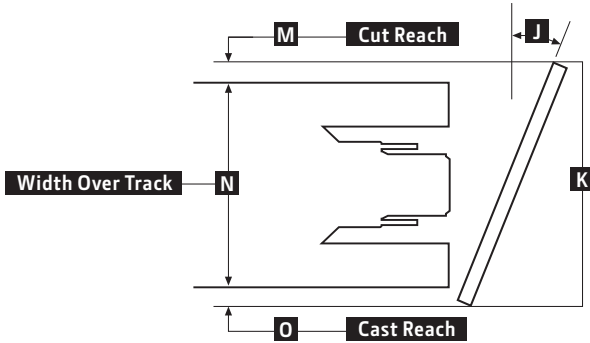
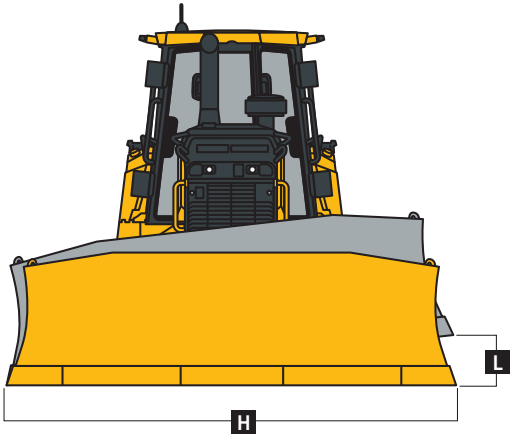


750K XLT / 750K LGP WITH POWER-ANGLE-TILT (PAT) BLADE



750K WITH OUTSIDE DOZER (OSD) BLADE

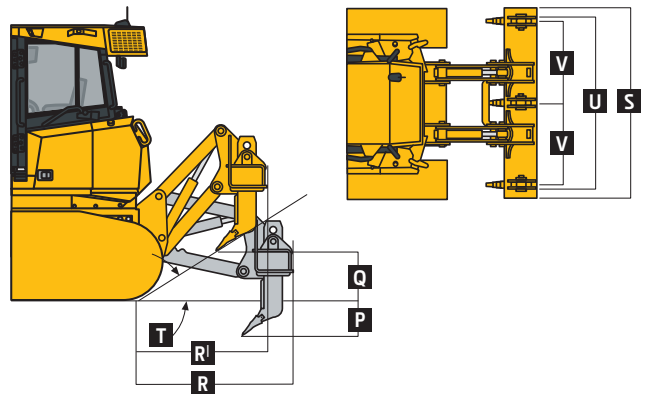
Machine Dimensions <i>(continued)</i>	750K XLT	750K LGP	750K
<b>Blade Type</b>	<b>PAT</b>	<b>PAT</b>	<b>OSD</b>
<b>Semi-U</b>			
<b>H</b> Blade Width	—	—	3251 mm (128 in.) (10 ft. 8 in.)
<b>I</b> Blade Height	—	—	1240 mm (48.8 in.) (4 ft. 0.8 in.)
SAE Capacity	—	—	4.3 m <sup>3</sup> (5.6 cu. yd.)
Weight	—	—	1163 kg (2,564 lb.)
Push-Beam Assembly Weight (without blade)	—	—	1470 kg (3,242 lb.)
<b>L</b> Blade Tilt	—	—	711 mm (28 in.)
<b>N</b> Width Over Track	—	—	2438 mm (96 in.) (8 ft. 0 in.)
<b>Straight</b>			
<b>H</b> Blade Width	3296 mm (130 in.) (10 ft. 10 in.)	3962 mm (156 in.) (13 ft. 0 in.)	—
<b>I</b> Blade Height	1194 mm (47 in.) (3 ft. 11 in.)	1170 mm (46.1 in.) (3 ft. 10.1 in.)	—
SAE Capacity	2.2 m <sup>3</sup> (4.2 cu. yd.)	3.8 m <sup>3</sup> (5.0 cu. yd.)	—
Weight	937 kg (2,066 lb.)	1081 kg (2,383 lb.)	—
C-Frame Assembly Weight (without blade)	1318 kg (2,905 lb.)	1318 kg (2,905 lb.)	—
<b>J</b> Blade Angle	23.5 deg.	23.5 deg.	—
<b>K</b> Overall Width with Blade Angled	3020 mm (118.9 in.) (9 ft. 10.9 in.)	3631 mm (142.9 in.) (11 ft. 10.9 in.)	—
<b>L</b> Blade Tilt (uses tilt jack)	437 mm (17.2 in.)	524 mm (20.6 in.)	—
<b>M</b> Cut Reach	108 mm (4.3 in.)	84 mm (3.3 in.)	—
<b>N</b> Width Over Track	2438 mm (96 in.) (8 ft. 0 in.)	2997 mm (118 in.) (9 ft. 10 in.)	—
<b>O</b> Cast Reach	224 mm (8.8 in.)	297 mm (11.7 in.)	—



**Rear Ripper 750K XLT / 750K LGP / 750K**

Multi-shank (3) parallelogram ripper with hydraulic pitch adjustment and ESCO® ripper tips

Weight	1690 kg (3,725 lb.)
<b>P</b> Maximum Penetration	686 mm (27 in.)
<b>Q</b> Maximum Clearance Under Tip	686 mm (27 in.)
<b>R</b> Overall Length, Lowered Position	1689 mm (67 in.) (5 ft. 7 in.)
<b>R<sup>l</sup></b> Overall Length, Raised Position	1448 mm (57 in.) (4 ft. 9 in.)
<b>S</b> Overall Beam Width	2134 mm (84 in.) (7 ft. 0 in.)
<b>T</b> Slope Angle (full raise)	22 deg.
<b>U</b> Ripping Width	1880 mm (74 in.) (6 ft. 2 in.)
<b>V</b> Distance Between Shanks	902 mm (36 in.) (3 ft. 0 in.)





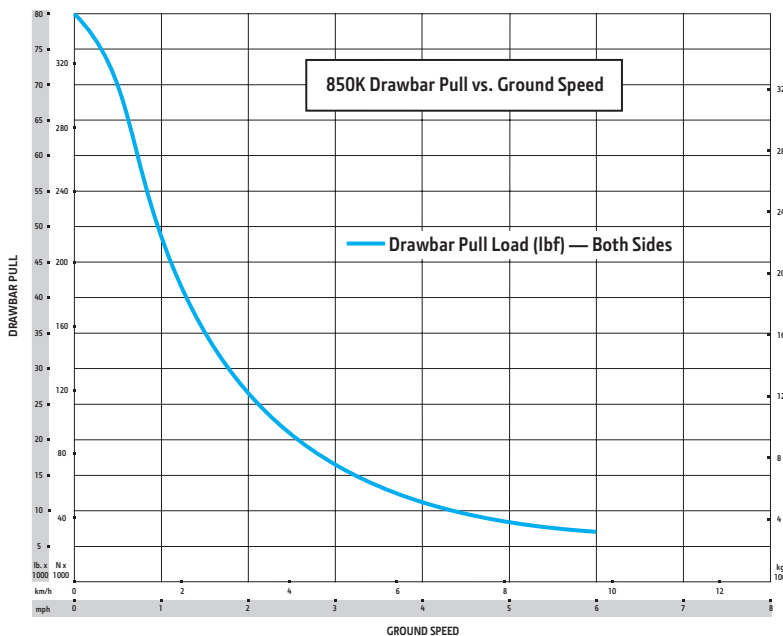
# 850K SPECIFICATIONS

Engine	850K XLT / 850K WLT / 850K LGP	850K / 850K WT / 850K LGP
<b>Blade Type</b>	<b>Power-Angle-Tilt (PAT)</b>	<b>Outside Dozer (OSD)</b>
Manufacturer and Model	John Deere PowerTech™ PSS 6068	John Deere PowerTech PSS 6068
Non-Road Emission Standard	EPA Final Tier 4/EU Stage IV	EPA Final Tier 4/EU Stage IV
Displacement	6.8L (414 cu. in.)	6.8L (414 cu. in.)
SAE Net Rated Power	152 kW (205 hp) at 1,800 rpm	152 kW (205 hp) at 1,800 rpm
Net Peak Torque	915 Nm (675 ft.-lb.) at 1,500 rpm	915 Nm (675 ft.-lb.) at 1,500 rpm
Aspiration	Turbocharged with charge-air cooler	Turbocharged with charge-air cooler
Air Cleaner	Vacuum-aspirated dual-element dry canister	Vacuum-aspirated dual-element dry canister
<b>Cooling</b>	<b>850K XLT / 850K WLT / 850K LGP / 850K / 850K WT</b>	
Type	Variable-speed suction fan with automatic reversing	
Engine Coolant Rating	-37 deg. C. (-34 deg. F)	
Engine Radiator	10 fins per in.	

Powertrain	
<b>Transmission</b>	Automatic, dual-path, hydrostatic (HST) drive; load-sensing feature automatically adjusts speed and power to match changing load conditions; each individually controlled track is powered by a variable-displacement piston pump and motor combination; ground-speed selection buttons on single-lever steering and direction control; independently selectable reverse speed ratios of 100%, 115%, or 130% of forward ground speed; decelerator pedal controls ground speed to stop
System Relief Pressure	45 850 kPa (6,650 psi)
<b>Travel Speeds</b>	
Forward and Reverse	9.7 km/h (6.0 mph)
Maximum (optional)	11.0 km/h (6.8 mph)
<b>Steering</b>	Single-lever steering, speed, direction control, and counter-rotation; full power turns and infinitely variable track speeds provide unlimited maneuverability and optimum control; HST steering eliminates steering clutches and brakes
<b>Final Drives</b>	Double-reduction, planetary final drives mounted independently of track frames and dozer push frames for isolation from shock loads
Total Ratio	44.75 to 1

Drawbar Pull	
Maximum	356 kN (80,000 lb.)
At 1.9 km/h (1.2 mph)	178 kN (40,000 lb.)
At 3.2 km/h (2.0 mph)	131 kN (29,500 lb.)

Brakes	
Service	HST (dynamic) braking stops machine whenever the direction/steering-control lever is moved to neutral or the decelerator is depressed to the end of travel
Parking	Exclusive spring-applied, hydraulically released park-brake safety feature engages wet, multiple-disc brakes automatically whenever the engine stops, the operator depresses the decelerator pedal to the brake position, the unit is in neutral for 3 seconds (with detected motion), or the park-lock lever is in the park position; machine cannot be driven with brake applied, minimizing wearout or need for adjustment

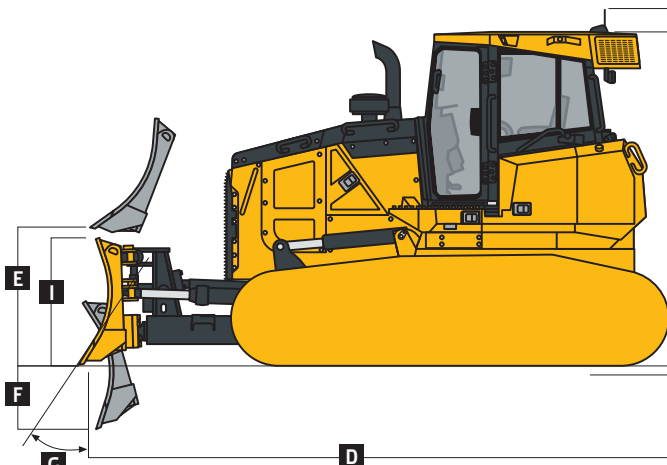


Hydraulics	850K XLT / 850K WLT / 850K LGP	850K / 850K WT / 850K LGP
<b>Blade Type</b>	<b>PAT</b>	<b>OSD</b>
Type	Load-sense hydraulic system with variable-displacement piston pump	
Pump Displacement	74 cc	74 cc
System Relief Pressure	24 993 kPa (3,625 psi)	24 993 kPa (3,625 psi)
Differential Pressure	1896 kPa (275 psi)	1896 kPa (275 psi)

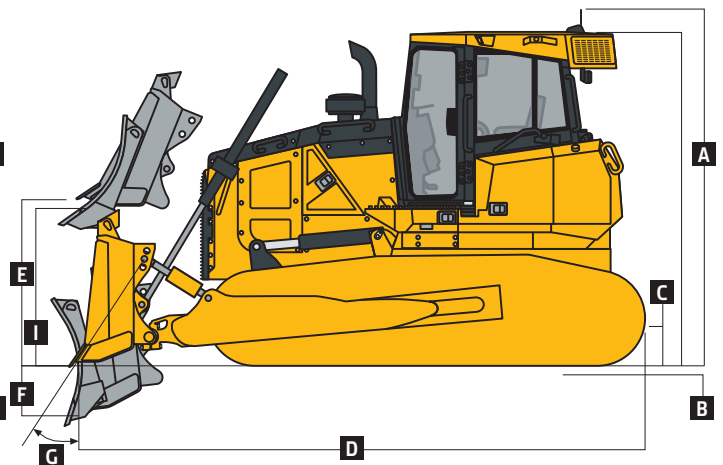


# 850K

Operating Weights <i>(continued)</i>	850K XLT	850K WLT	850K LGP	850K	850K WT	850K LGP
<b>Blade Type</b>	<b>PAT</b>	<b>PAT</b>	<b>PAT</b>	<b>OSD</b>	<b>OSD</b>	<b>OSD</b>
<b>Optional Components <i>(continued)</i></b>						
Heavy-Duty Grille	35 kg (78 lb.)	35 kg (78 lb.)	35 kg (78 lb.)	35 kg (78 lb.)	35 kg (78 lb.)	35 kg (78 lb.)
Lift-Cylinder Hose Guards	42 kg (93 lb.)	42 kg (93 lb.)	42 kg (93 lb.)	80 kg (176 lb.)	80 kg (176 lb.)	80 kg (176 lb.)
Tank Guards	323 kg (712 lb.)	323 kg (712 lb.)	323 kg (712 lb.)	323 kg (712 lb.)	323 kg (712 lb.)	323 kg (712 lb.)
<b>Counterweight</b>						
Front	397 kg (875 lb.)	397 kg (875 lb.)	397 kg (875 lb.)	397 kg (875 lb.)	397 kg (875 lb.)	397 kg (875 lb.)
Rear	449 kg (990 lb.)	449 kg (990 lb.)	449 kg (990 lb.)	449 kg (990 lb.)	449 kg (990 lb.)	449 kg (990 lb.)
Retrieval Hitch	52 kg (114 lb.)	52 kg (114 lb.)	52 kg (114 lb.)	52 kg (114 lb.)	52 kg (114 lb.)	52 kg (114 lb.)
Drawbar, Extended Rigid	130 kg (286 lb.)	130 kg (286 lb.)	130 kg (286 lb.)	130 kg (286 lb.)	130 kg (286 lb.)	130 kg (286 lb.)
Blade Brush Guard	87 kg (192 lb.)	87 kg (192 lb.)	87 kg (192 lb.)	87 kg (192 lb.)	87 kg (192 lb.)	87 kg (192 lb.)
Center Chain Guides	85 kg (188 lb.)	85 kg (188 lb.)	85 kg (188 lb.)	85 kg (188 lb.)	85 kg (188 lb.)	85 kg (188 lb.)
Full-Length Rock Guards	242 kg (534 lb.)	242 kg (534 lb.)	242 kg (534 lb.)	222 kg (490 lb.)	222 kg (490 lb.)	242 kg (534 lb.)
Final-Drive Trash Guards	70 kg (155 lb.)	70 kg (155 lb.)	70 kg (155 lb.)	70 kg (155 lb.)	70 kg (155 lb.)	70 kg (155 lb.)
<b>Striker Bars</b>						
Front	—	73 kg (160 lb.)	73 kg (160 lb.)	—	111 kg (245 lb.)	147 kg (325 lb.)
Rear	—	78 kg (171 lb.)	78 kg (171 lb.)	—	166 kg (366 lb.)	78 kg (171 lb.)
<b>Pre-Cleaner</b>						
Powered Cab Air	21 kg (47 lb.)	21 kg (47 lb.)	21 kg (47 lb.)	21 kg (47 lb.)	21 kg (47 lb.)	21 kg (47 lb.)
Rotary Ejector Engine Air	6 kg (13 lb.)	6 kg (13 lb.)	6 kg (13 lb.)	6 kg (13 lb.)	6 kg (13 lb.)	6 kg (13 lb.)
<b>Track Shoes</b>						
560-mm (22 in.) Extreme Duty	175 kg (385 lb.)	—	—	155 kg (342 lb.)	-213 kg (-470 lb.)	—
610-mm (24 in.) Moderate Duty	In base	—	-850 kg (-1,873 lb.)	In base	-368 kg (-812 lb.)	-847 kg (-1,868 lb.)
610-mm (24 in.) Extreme Duty	346 kg (762 lb.)	—	-504 kg (-1,111 lb.)	307 kg (677 lb.)	-61 kg (-135 lb.)	-502 kg (-1,108 lb.)
760-mm (30 in.) Moderate Duty	—	In base	-435 kg (-959 lb.)	—	In base	—
760-mm (30 in.) Extreme Duty	—	444 kg (979 lb.)	9 kg (19 lb.)	—	395 kg (870 lb.)	—
910-mm (36 in.) Moderate Duty	—	—	In base	—	—	In base
910-mm (36 in.) Extreme Duty	—	—	524 kg (1,155 lb.)	—	—	523 kg (1,153 lb.)
<b>Machine Dimensions</b>						
<b>A</b> Overall Height to Roof	3211 mm (10 ft. 6.5 in.)	—	3211 mm (10 ft. 6.5 in.)	—	3211 mm (10 ft. 6.5 in.)	—
<b>A</b> <sup>1</sup> Overall Height to Receivers/Antennae	3600 mm (11 ft. 10 in.)	—	3600 mm (11 ft. 10 in.)	—	3600 mm (11 ft. 10 in.)	—
<b>B</b> Tread Depth with Single-Bar Grouser						
Moderate Duty	66 mm (2.6 in.)	66 mm (2.6 in.)	66 mm (2.6 in.)	66 mm (2.6 in.)	66 mm (2.6 in.)	66 mm (2.6 in.)
Extreme Duty	71 mm (2.8 in.)	71 mm (2.8 in.)	71 mm (2.8 in.)	71 mm (2.8 in.)	71 mm (2.8 in.)	71 mm (2.8 in.)
<b>C</b> Ground Clearance in Dirt						
<b>D</b> Overall Length	5740 mm (226 in.)	5740 mm (226 in.)	5740 mm (226 in.)	5384 mm (212 in.)	5384 mm (212 in.)	5940 mm (234 in.)
Length with Extended Drawbar	5937 mm (234 in.)	5937 mm (234 in.)	5937 mm (234 in.)	5569 mm (219 in.)	5569 mm (219 in.)	6137 mm (242 in.)
<b>E</b> Blade Lift Height	1072 mm (42 in.)	1072 mm (42 in.)	1072 mm (42 in.)	1151 mm (45 in.)	1151 mm (45 in.)	1151 mm (45 in.)
<b>F</b> Blade Digging Depth	704 mm (28 in.)	704 mm (28 in.)	704 mm (28 in.)	599 mm (24 in.)	599 mm (24 in.)	599 mm (24 in.)
<b>G</b> Blade Cutting-Edge Angle, Adjustable	55.1 to 60.2 deg.	55.1 to 60.2 deg.	55.1 to 60.2 deg.	51.5 to 61.0 deg.	51.5 to 61.0 deg.	51.5 to 61.0 deg.



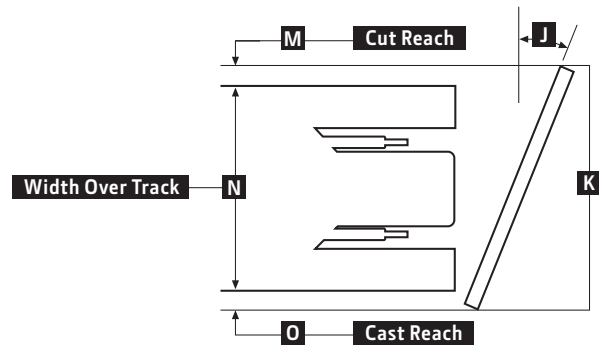
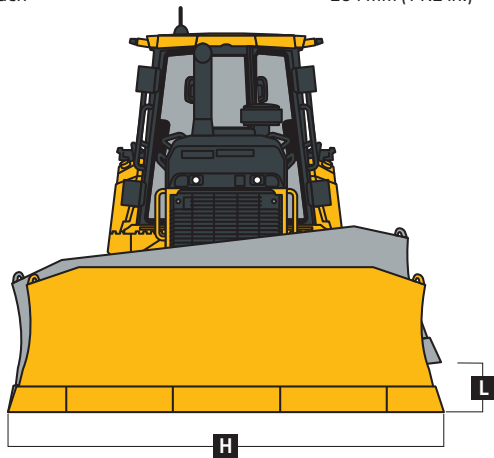
850K XLT / 850K WLT / 850K LGP WITH POWER-ANGLE-TILT (PAT) BLADE



850K / 850K WT / 850K LGP WITH OUTSIDE DOZER (OSD) BLADE



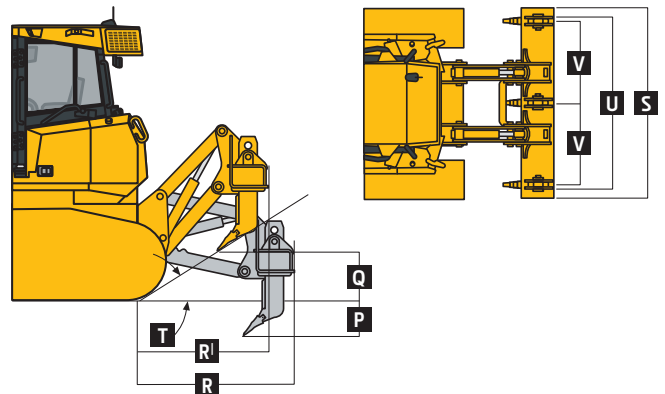
Machine Dimensions (continued)	850K XLT	850K WLT	850K LGP	850K	850K WT	850K LGP
<b>Blade Type</b>	<b>PAT</b>	<b>PAT</b>	<b>PAT</b>	<b>OSD</b>	<b>OSD</b>	<b>OSD</b>
<b>H Blade Width</b>	—	—	—	<b>Semi-U</b> 3251 mm (128 in.) (10 ft. 8 in.)	3556 mm (140 in.) (11 ft. 8 in.)	3861 mm (152 in.) (12 ft. 8 in.)
<b>I Blade Height</b>	—	—	—	1422 mm (56 in.) (4 ft. 8 in.)	1374 mm (54 in.) (4 ft. 6 in.)	1321 mm (52 in.) (4 ft. 4 in.)
<b>SAE Capacity</b>	—	—	—	5.6 m <sup>3</sup> (7.3 cu. yd.)	5.8 m <sup>3</sup> (7.6 cu. yd.)	6.0 m <sup>3</sup> (7.8 cu. yd.)
<b>Weight</b>	—	—	—	1643 kg (3,286 lb.)	1567 kg (3,455 lb.)	1641 kg (3,612 lb.)
<b>Push-Beam Assembly Weight (without blade)</b>	—	—	—	1820 kg (4,004 lb.)	1889 kg (4,156 lb.)	2101 kg (4,622 lb.)
<b>L Blade Tilt</b>	—	—	—	753 mm (30 in.)	753 mm (30 in.)	853 mm (34 in.)
<b>N Width Over Track</b>	—	—	—	2489 mm (98 in.) (8 ft. 2 in.)	2794 mm (110 in.) (9 ft. 2 in.)	3099 mm (122 in.) (10 ft. 2 in.)
	<b>PAT</b>			<b>Straight</b>		
<b>H Blade Width</b>	3708 mm (146 in.) (12 ft. 2 in.)	4013 mm (158 in.) (13 ft. 2 in.)	4267 mm (168 in.) (14 ft. 0 in.)	—	—	3912 mm (154 in.) (12 ft. 10 in.)
<b>I Blade Height</b>	1229 mm (48 in.) (4 ft. 0 in.)	1229 mm (48 in.) (4 ft. 0 in.)	1229 mm (48 in.) (4 ft. 0 in.)	—	—	1258 mm (49.5 in.) (4 ft. 1.5 in.)
<b>SAE Capacity</b>	3.9 m <sup>3</sup> (5.2 cu. yd.)	4.3 m <sup>3</sup> (5.6 cu. yd.)	4.5 m <sup>3</sup> (5.9 cu. yd.)	—	—	4.1 m <sup>3</sup> (5.4 cu. yd.)
<b>Weight</b>	1251 kg (2,758 lb.)	1330 kg (2,932 lb.)	1397 kg (3,080 lb.)	—	—	1561 kg (3,441 lb.)
<b>C-Frame Assembly Weight (without blade)</b>	1647 kg (3,631 lb.)	1647 kg (3,631 lb.)	1647 kg (3,631 lb.)	—	—	2101 kg (4,622 lb.)
<b>J Blade Angle</b>	23.8 deg.	23.8 deg.	23.8 deg.	—	—	—
<b>K Overall Width with Blade Angled</b>	3391 mm (134 in.) (11 ft. 2 in.)	3658 mm (144 in.) (12 ft. 0 in.)	3901 mm (154 in.) (12 ft. 10 in.)	—	—	—
<b>L Blade Tilt (uses tilt jack)</b>	508 mm (20 in.)	533 mm (21 in.)	572 mm (23 in.)	—	—	—
<b>M Cut Reach</b>	158 mm (6.2 in.)	145 mm (5.7 in.)	109 mm (4.3 in.)	—	—	—
<b>N Width Over Track</b>	2693 mm (106 in.) (8 ft. 10 in.)	2997 mm (118 in.) (9 ft. 10 in.)	3302 mm (130 in.) (10 ft. 10 in.)	—	—	—
<b>O Cast Reach</b>	284 mm (11.2 in.)	272 mm (10.7 in.)	234 mm (9.2 in.)	—	—	—



### Rear Ripper

850K XLT / 850K WLT / 850K LGP / 850K / 850K WT

Multi-shank (3) parallelogram ripper with hydraulic pitch adjustment and ESCO® ripper tips	
<b>Weight</b>	2032 kg (4,480 lb.)
<b>P Maximum Penetration</b>	724 mm (28.5 in.)
<b>Q Maximum Clearance Under Tip</b>	610 mm (24 in.)
<b>R Overall Length, Lowered Position</b>	1626 mm (64 in.) (5 ft. 4 in.)
<b>R<sup>l</sup> Overall Length, Raised Position</b>	1525 mm (60 in.) (5 ft. 0 in.)
<b>S Overall Beam Width</b>	2400 mm (94 in.) (7 ft. 10 in.)
<b>T Slope Angle (full raise)</b>	24 deg.
<b>U Ripping Width</b>	2146 mm (85 in.) (7 ft. 1 in.)
<b>V Distance Between Shanks</b>	1041 mm (41 in.) (3 ft. 5 in.)



# Additional equipment

Key: ● Standard ▲ Optional or special

See your John Deere dealer for further information.

700K	750K	850K	Engine
●	●	●	Meets EPA Final Tier 4/EU Stage IV emissions
●	●	●	Wet-sleeve cylinder liners
●	●	●	Eco mode
●	●	●	Exhaust stack, black
▲	▲	▲	Exhaust stack, chrome
●	●	●	Turbocharged and air-to-air aftercooled
●	●	●	Dual-element dry-canister air cleaner
●	●	●	Engine glow-plug starting system
●	●	●	Programmable auto engine shutdown
●	●	●	Automatic turbo cool-down timer
●	●	●	Exhaust filter, under hood, with vertical stack
●	●	●	Fuel filters with automatic electronic priming
▲	▲	▲	Severe-duty fuel filter
▲	▲	▲	Engine block heater
▲	▲	▲	Engine coolant heater, fuel fired
●	●	●	100-amp alternator (canopy)
●	●	●	130-amp alternator (cab)
<b>Cooling</b>			
●	●	●	Tilt-out cooling fan, hydraulically driven, variable-speed suction type
●	●	●	Engine cooling rated -37 deg. C (-34 deg. F)
▲	●	●	Automatic, programmable reversing fan
●	●	●	Engine radiator, hydrostatic (HST) cooler, and hydraulic cooler, 10 fins per in.
●	●	●	Enclosed safety fan guard (conforms to SAE J1308 and ISO 3457)
●	●	●	V-cool cooler design
<b>Powertrain</b>			
●	●	●	Dual-path HST transmission
●	●	●	Selectable reverse-speed ratios
●	●	●	Operator-selectable decelerator function (hydrostats and engine or hydrostats only)
●	●	●	Single-lever steering with counter-rotate function
●	●	●	Full power turns with infinitely variable track speed
●	●	●	HST (dynamic) service brakes
●	●	●	Wet, multi-disc parking brake
●	●	●	Remote diagnostic test ports
●	●	●	Automatic cold-weather transmission warmup system
●	●	●	Automatic transmission derating for exceeded system temperatures
●	●	●	Sealed dedicated transmission reservoir and filtration system separate from hydraulic system
<b>Hydraulic System</b>			
●	●	●	Load-sense electrohydraulic (EH) system with variable-displacement piston pump
●	●	●	2-function hydraulics
●	▲	▲	3-function hydraulics
▲	▲	▲	3-function hydraulics with rear plumbing
▲	▲	▲	4-function hydraulics with rear plumbing
▲	▲	▲	Grade-control-ready EH hydraulics

700K	750K	850K	Hydraulic System (continued)
●	●	●	Hydrau™ All-Season Hydraulic Oil, -25 deg. C to 50 deg. C (-13 deg. F to 122 deg. F)
▲	▲	▲	Hydrau™ XR Hydraulic Oil, -40 deg. C to 40 deg. C (-40 deg. F to 104 deg. F)
●	▲	▲	Power pitch for outside dozer
●	●	●	Hydraulic pump, standard
●	▲	▲	Hydraulic pump, high flow
▲	▲	▲	Hydraulic pump for direct-drive winch
●	●	●	Sealed dedicated hydraulic reservoir and filtration system separate from transmission system
<b>Undercarriage</b>			
●	●	●	Full-length, smooth-surface track frame covers
●	●	●	Double-flange rollers
●	●	●	Oscillating undercarriage
▲	●	●	Heavy-duty sealed and lubricated undercarriage
▲	●	●	Standard Life undercarriage system
●	●	●	Maximum Life undercarriage system
▲	▲	▲	Extended Life undercarriage with SC-2™ bushings
▲	▲	▲	Full-length rock guards
<b>Operator's Station</b>			
▲	▲	▲	Canopy cab
▲	▲	▲	Enclosed cab with air/heat
▲	▲	▲	Air-suspension vinyl seat (canopy)
▲	▲	▲	Air-suspension cloth seat (enclosed cab)
▲	▲	▲	Air-suspension heated deluxe seat (enclosed cab)
●	●	●	Under-seat heater (cab)
▲	▲	▲	Under-seat heater (canopy)
●	●	●	AM/FM/Weather-Band (WB) radio, clock, and MP3 player front plug-in (cab)
●	●	●	Multifunction/multi-language LCD monitor: Analog display (fuel level, coolant temperature, and engine oil pressure) / Digital display (engine rpm, charge pressure, hours, diesel particulate filter [DPF] soot level, and transmission direction/speed range)
▲	▲	▲	HVAC-powered precleaner
▲	▲	▲	178-mm (7 in.) color, multi-language Primary Display Unit (PDU) (with EH hydraulics only)
●	●	●	Backup alarm
●	●	●	12-volt accessory plug (1)
▲	▲	▲	12-volt accessory plug (2)
●	●	●	Keyless start with multiple security codes
▲*	▲	▲	External-mounted rear-attachment mirror
▲	▲	▲	Rear wiper and washer (cab)
<b>Overall Vehicle</b>			
●	●	●	Tilt operator station service access
●	●	●	Environmental drain package
▲	▲	▲	Fluid-sample valves
●	●	●	JDLink™ wireless machine communication system (available in specific countries; see your local dealer for details)

700K	750K	850K	Overall Vehicle (continued)	
▲	▲	▲	Quick service ports (HST, hydraulic, and engine oil, and coolant)	
●	▲	▲	Fast-fuel system	
●	●	●	Lights, grille mounted (2), rear mounted (2)	
▲	▲	▲	Additional lights (2)	
▲	●	●	Engine-compartment light	
▲	▲	▲	Beacon light	
▲	▲	▲	Topcon grade-control system	
▲	▲	▲	Topcon-, Trimble-, or Leica-ready interface package	
▲	▲	▲	Operator-protection package	
▲	▲	▲	Forestry-protection package	
●	●	●	Lockable master electrical disconnect switch	
<b>Attachments</b>				
●	▲	▲	Cab mounts and isolators for forestry package	
▲	▲	▲	Large debris prescreen	
▲	▲	▲	Recessed sprockets	
▲	▲	▲	Final-drive trash guards (trash applications)	
▲	▲	▲	Rear ripper, parallelogram	
▲	▲	▲	Counterweight, front, 172 kg (380 lb.)	
●	▲	▲	Rear counterweight (1 or 2)	
●	●	●	Tilt-out front grille	
▲	▲	▲	Retrieval hitch with pin	
▲	▲	▲	Retrieval hitch with 1 or 2 counterweights	
▲	▲	▲	Extended rigid drawbar	
▲	▲	▲	Winch, John Deere 4000S, power in/free spool out OR power out	
▲	▲	▲	4-roller fairlead for winch	
▲	▲	▲	Root-rake blade attachment	
<b>XLT LGP 700K Shoes</b>				
●	▲	▲	560-mm (22 in.) moderate service	
●	▲	▲	610-mm (24 in.) moderate service	
●	●	●	760-mm (30 in.) moderate service	
<b>STD XLT LGP 750K Shoes</b>				
●	●	▲	560-mm (22 in.) moderate service	
▲	▲	▲	560-mm (22 in.) extreme service	
▲	▲	▲	610-mm (24 in.) moderate service	
▲	▲	▲	610-mm (24 in.) extreme service	
▲	▲	▲	710-mm (28 in.) moderate service	
●	●	●	865-mm (34 in.) moderate service with clipped corners	
<b>STD WT XLT WLT LGP 850K Shoes</b>				
▲	▲	▲	▲	560-mm (22 in.) extreme service
●	▲	●	▲	610-mm (24 in.) moderate service
▲	▲	▲	▲	610-mm (24 in.) extreme service
●	●	●	▲	760-mm (30 in.) moderate service with clipped corners
▲	▲	▲	▲	760-mm (30 in.) extreme service with clipped corners
●	●	●	▲	910-mm (36 in.) moderate service with clipped corners
▲	▲	▲	▲	910-mm (36 in.) extreme service with clipped corners

\*Cab only.



Net engine power is with standard equipment including air cleaner, exhaust system, alternator, and cooling fan at test conditions specified per ISO9249. No derating is required up to 3050-m (10,000 ft.) altitude. Also available: winches, fair-leads, log arches, skidding grapples, trash packages, landfill protection packages, cable plows, side booms, field-installed cab for canopy, canopy heater, and fire-suppression systems. Specifications and design subject to change without notice. Wherever applicable, specifications are in accordance with SAE standards. Except where otherwise noted, these specifications are based on units with ROPS, full fuel tanks, and 79-kg (175 lb.) operators. Operator station ROPS and FOPS certified.